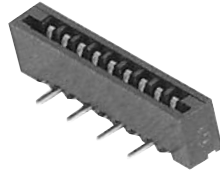
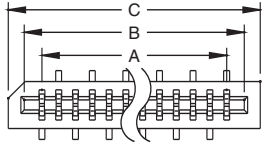
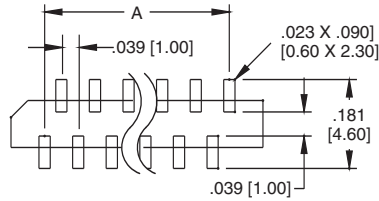
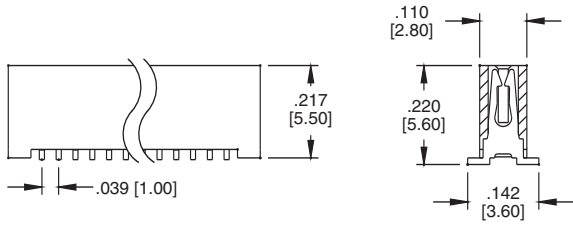


PCB-C

.039" (1.00) TOP ENTRY SMT



PCB-C-09-T-SMT

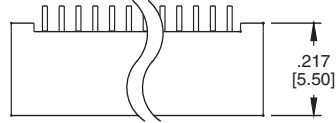


A = .039 [1.00] X No. of Spaces
 B = A + .090 [2.30]
 C = A + .157 [4.00]

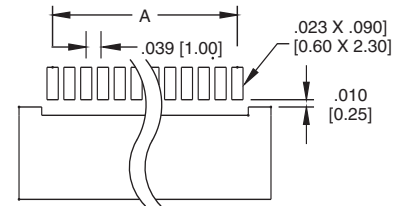
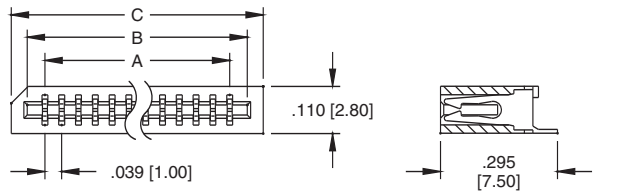
Recommended PCB Layout

PCB-C

.039" (1.00) SIDE ENTRY SMT



PCB-C-08-SA-SMT

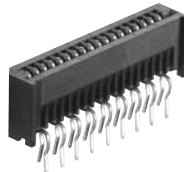
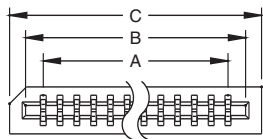


A = .039 [1.00] X No. of Spaces
 B = A + .090 [2.30]
 C = A + .157 [4.00]

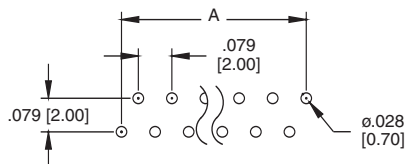
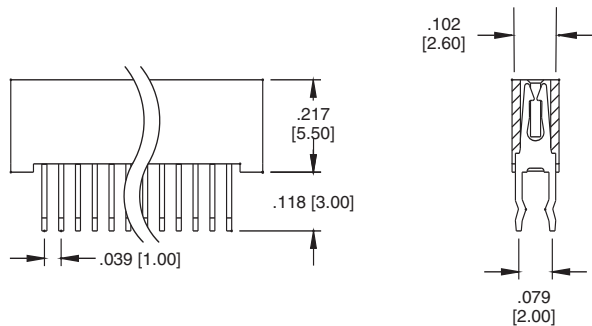
Recommended PCB Layout

PCB-C

.039" (1.00) TOP ENTRY THRU HOLE



PCB-C-18-T-20

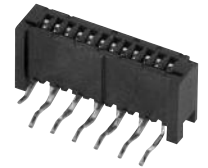
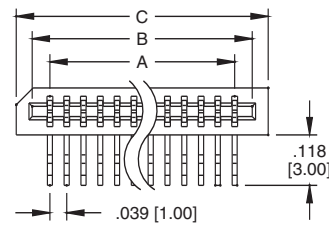


A = .039 [1.00] X No. of Spaces
 B = A + .090 [2.30]
 C = A + .157 [4.00]

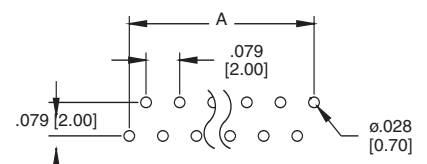
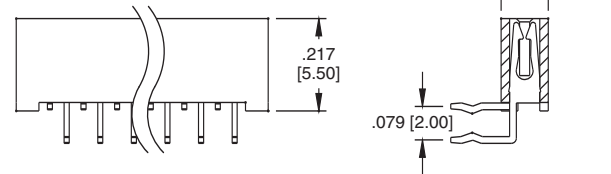
Recommended PCB Layout

PCB-C

.039" (1.00) SIDE ENTRY THRU HOLE



PCB-C-12-SA-20



A = .039 [1.00] X No. of Spaces
 B = A + .090 [2.30]
 C = A + .157 [4.00]

Recommended PCB Layout